

KITSAP PUBLIC HEALTH DISTRICT School Health and Safety Program

Steve Brown & Rudy Baum
Kitsap Public Health District
Environmental Health Division



KITSAP PUBLIC HEALTH DISTRICT

Overview

Washington Administrative Code 246-366

- Sets health and safety standards for all public and private schools in WA.
- Establishes the role of local health districts in promoting safe and healthy learning environments for Washington students.
- Does not include early learning programs, day cares, etc.



Program Elements

WAC 246-366 Responsibilities

- **Construction Review** for school plans to ensure compliance with WAC 246-366.
- **Health and Safety Inspections –** Inspect schools to identify potential health and safety hazards.

Technical Assistance

- Provide guidance on emerging health & safety concerns.
- Pollution Prevention Assistance program (Department of Ecology partnership).

WASHINGTON ADMINISTRATIVE CODE	WASHINGTON ADMINISTRATIVE CODE	WASHINGTON ADMINISTRATIVE CODE	WASHINGTON ADMINISTRATIVE CODE
WAC	WAC	WAC	WAC
VOLUME 2	VOLUME 3	VOLUME 4	VOLUME 5
100 Health Plan 101 Comm'n 102 Dep't for 103 School for 104 Social Mgt., Oic. 105 Comm'n 106 Health Plan 107 WASH. Bd. 108 WASH. Bd. 109 WASH. Bd. 110 WASH. Bd. 111 WASH. Bd. 112 WASH. Bd. 113 WASH. Bd. 114 WASH. Bd. 115 WASH. Bd. 116 WASH. Bd. 117 WASH. Bd. 118 WASH. Bd. 119 WASH. Bd. 120 WASH. Bd. 121 WASH. Bd. 122 WASH. Bd. 123 WASH. Bd. 124 WASH. Bd. 125 WASH. Bd. 126 WASH. Bd. 127 WASH. Bd. 128 WASH. Bd. 129 WASH. Bd. 130 WASH. Bd. 131 WASH. Bd. 132 WASH. Bd. 133 WASH. Bd. 134 WASH. Bd. 135 WASH. Bd. 136 WASH. Bd. 137 WASH. Bd. 138 WASH. Bd. 139 WASH. Bd. 140 WASH. Bd. 141 WASH. Bd. 142 WASH. Bd. 143 WASH. Bd. 144 WASH. Bd. 145 WASH. Bd. 146 WASH. Bd. 147 WASH. Bd. 148 WASH. Bd. 149 WASH. Bd. 150 WASH. Bd. 151 WASH. Bd. 152 WASH. Bd. 153 WASH. Bd. 154 WASH. Bd. 155 WASH. Bd. 156 WASH. Bd. 157 WASH. Bd. 158 WASH. Bd. 159 WASH. Bd. 160 WASH. Bd. 161 WASH. Bd. 162 WASH. Bd. 163 WASH. Bd. 164 WASH. Bd. 165 WASH. Bd. 166 WASH. Bd. 167 WASH. Bd. 168 WASH. Bd. 169 WASH. Bd. 170 WASH. Bd. 171 WASH. Bd. 172 WASH. Bd. 173 WASH. Bd. 174 WASH. Bd. 175 WASH. Bd. 176 WASH. Bd. 177 WASH. Bd. 178 WASH. Bd. 179 WASH. Bd. 180 WASH. Bd. 181 WASH. Bd. 182 WASH. Bd. 183 WASH. Bd. 184 WASH. Bd. 185 WASH. Bd. 186 WASH. Bd. 187 WASH. Bd. 188 WASH. Bd. 189 WASH. Bd. 190 WASH. Bd. 191 WASH. Bd. 192 WASH. Bd. 193 WASH. Bd. 194 WASH. Bd. 195 WASH. Bd. 196 WASH. Bd. 197 WASH. Bd. 198 WASH. Bd. 199 WASH. Bd. 200 WASH. Bd. 201 WASH. Bd. 202 WASH. Bd. 203 WASH. Bd. 204 WASH. Bd. 205 WASH. Bd. 206 WASH. Bd. 207 WASH. Bd. 208 WASH. Bd. 209 WASH. Bd. 210 WASH. Bd. 211 WASH. Bd. 212 WASH. Bd. 213 WASH. Bd. 214 WASH. Bd. 215 WASH. Bd. 216 WASH. Bd. 217 WASH. Bd. 218 WASH. Bd. 219 WASH. Bd. 220 WASH. Bd. 221 WASH. Bd. 222 WASH. Bd. 223 WASH. Bd. 224 WASH. Bd. 225 WASH. Bd. 226 WASH. Bd. 227 WASH. Bd. 228 WASH. Bd. 229 WASH. Bd. 230 WASH. Bd. 231 WASH. Bd. 232 WASH. Bd. 233 WASH. Bd. 234 WASH. Bd. 235 WASH. Bd. 236 WASH. Bd. 237 WASH. Bd. 238 WASH. Bd. 239 WASH. Bd. 240 WASH. Bd. 241 WASH. Bd. 242 WASH. Bd. 243 WASH. Bd. 244 WASH. Bd. 245 WASH. Bd. 246 WASH. Bd. 247 WASH. Bd. 248 WASH. Bd. 249 WASH. Bd. 250 WASH. Bd. 251 WASH. Bd. 252 WASH. Bd. 253 WASH. Bd. 254 WASH. Bd. 255 WASH. Bd. 256 WASH. Bd. 257 WASH. Bd. 258 WASH. Bd. 259 WASH. Bd. 260 WASH. Bd. 261 WASH. Bd. 262 WASH. Bd. 263 WASH. Bd. 264 WASH. Bd. 265 WASH. Bd. 266 WASH. Bd. 267 WASH. Bd. 268 WASH. Bd. 269 WASH. Bd. 270 WASH. Bd. 271 WASH. Bd. 272 WASH. Bd. 273 WASH. Bd. 274 WASH. Bd. 275 WASH. Bd. 276 WASH. Bd. 277 WASH. Bd. 278 WASH. Bd. 279 WASH. Bd. 280 WASH. Bd. 281 WASH. Bd. 282 WASH. Bd. 283 WASH. Bd. 284 WASH. Bd. 285 WASH. Bd. 286 WASH. Bd. 287 WASH. Bd. 288 WASH. Bd. 289 WASH. Bd. 290 WASH. Bd. 291 WASH. Bd. 292 WASH. Bd. 293 WASH. Bd. 294 WASH. Bd. 295 WASH. Bd. 296 WASH. Bd. 297 WASH. Bd. 298 WASH. Bd. 299 WASH. Bd. 300 WASH. Bd.	154 Deferred Comp'n 155 Design Stds Comm. 156 Human Res. Comm'n 157 Drug Abuse Prev. 158 Eastern Wash. Univ. 159 Ecology, Dep't 160 Evergreen State Coll. 161 Econ. Asst. Auth. 162 Economic Opp'ty 163 Economic Dev't Finance 164 Auth'y 165 166 167 168 169 170 171 172 173 174 175 176 177 178 179 180 181 182 183 184 185 186 187 188 189 190 191 192 193 194 195 196 197 198 199 200 201 202 203 204 205 206 207 208 209 210 211 212 213 214 215 216 217 218 219 220 221 222 223 224 225 226 227 228 229 230 231 232 233 234 235 236 237 238 239 240 241 242 243 244 245 246 247 248 249 250 251 252 253 254 255 256 257 258 259 260 261 262 263 264 265 266 267 268 269 270 271 272 273 274 275 276 277 278 279 280 281 282 283 284 285 286 287 288 289 290 291 292 293 294 295 296 297 298 299 300	180 Education, Board of 182 Health Care Authority 184 Emp. Retire., Public 185 Emp. Retire., Cities 186 Emp. Sugg'n Awards 187 Employment Security 188 Employment Security 189 Employment Security 190 Employment Security 191 Employment Security 192 Employment Security 193 Employment Security 194 Employment Security 195 Employment Security 196 Employment Security 197 Employment Security 198 Employment Security 199 Employment Security 200 Employment Security 201 Employment Security 202 Employment Security 203 Employment Security 204 Employment Security 205 Employment Security 206 Employment Security 207 Employment Security 208 Employment Security 209 Employment Security 210 Employment Security 211 Employment Security 212 Employment Security 213 Employment Security 214 Employment Security 215 Employment Security 216 Employment Security 217 Employment Security 218 Employment Security 219 Employment Security 220 Employment Security 221 Employment Security 222 Employment Security 223 Employment Security 224 Employment Security 225 Employment Security 226 Employment Security 227 Employment Security 228 Employment Security 229 Employment Security 230 Employment Security 231 Employment Security 232 Employment Security 233 Employment Security 234 Employment Security 235 Employment Security 236 Employment Security 237 Employment Security 238 Employment Security 239 Employment Security 240 Employment Security 241 Employment Security 242 Employment Security 243 Employment Security 244 Employment Security 245 Employment Security 246 Employment Security 247 Employment Security 248 Employment Security 249 Employment Security 250 Employment Security 251 Employment Security 252 Employment Security 253 Employment Security 254 Employment Security 255 Employment Security 256 Employment Security 257 Employment Security 258 Employment Security 259 Employment Security 260 Employment Security 261 Employment Security 262 Employment Security 263 Employment Security 264 Employment Security 265 Employment Security 266 Employment Security 267 Employment Security 268 Employment Security 269 Employment Security 270 Employment Security 271 Employment Security 272 Employment Security 273 Employment Security 274 Employment Security 275 Employment Security 276 Employment Security 277 Employment Security 278 Employment Security 279 Employment Security 280 Employment Security 281 Employment Security 282 Employment Security 283 Employment Security 284 Employment Security 285 Employment Security 286 Employment Security 287 Employment Security 288 Employment Security 289 Employment Security 290 Employment Security 291 Employment Security 292 Employment Security 293 Employment Security 294 Employment Security 295 Employment Security 296 Employment Security 297 Employment Security 298 Employment Security 299 Employment Security 300 Employment Security	237 Geographic Names 240 Governor, Oic. 242 Growth Plan. Hrgs. Bds. 244 Hardwood Comm'n 246 Health, Dep't 247 248 249 250 251 252 253 254 255 256 257 258 259 260 261 262 263 264 265 266 267 268 269 270 271 272 273 274 275 276 277 278 279 280 281 282 283 284 285 286 287 288 289 290 291 292 293 294 295 296 297 298 299 300



Health & Safety Standards

“Health and Safety Guide for K-12 Schools in Washington.”

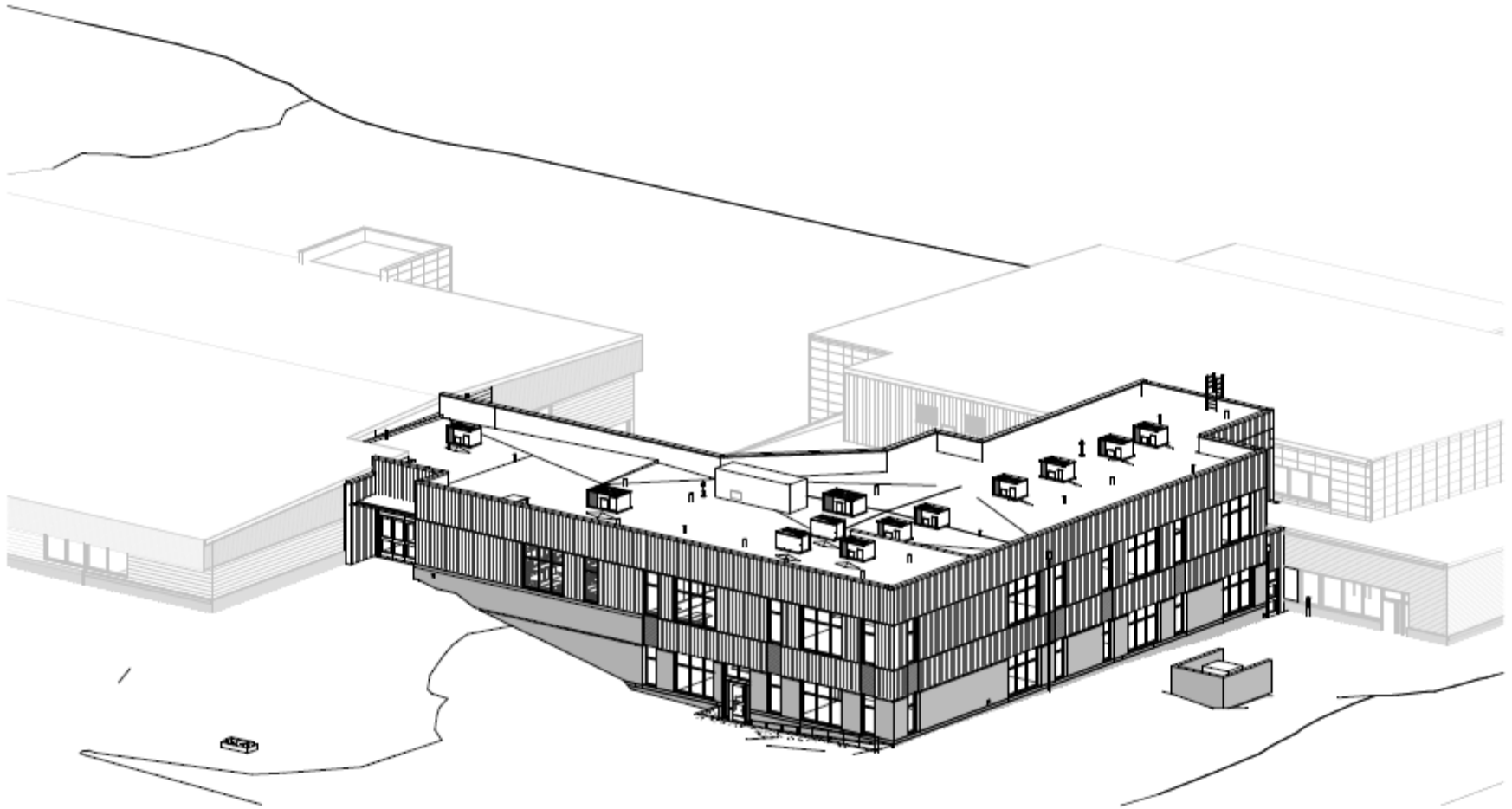
- Foundational document for KPHD’s school health and safety program.
- Comprehensive collection of regulatory requirements and best practices:
 - WAC 246-366 requirements
 - Workplace safety regulations
 - Building and fire codes
 - DOH/OSPI recommendations
- Used in both plan reviews and school inspections.

C. GENERAL SAFETY

		Required	
		Recommended	
C 001	Safety glass shall be installed in all doors, display cases, and other large glass areas as required by the State Building Code (UBC) Human Impact Loads 2406.3 - "Individual glazed areas in hazardous locations (e.g., exit corridors) such as those indicated in Sec 2406.4.		x
S	U		
<input type="checkbox"/>	<input type="checkbox"/>		
C 002	Safe motor vehicle drop-off and pick-up locations are required for student arrival and departure.		x
S	U		
<input type="checkbox"/>	<input type="checkbox"/>		
C 003	All custodial maintenance supplies shall be labeled as to specific contents and be stored in secure areas inaccessible to students. MSDS sheets are required to be kept on site and readily available.		x
S	U		
<input type="checkbox"/>	<input type="checkbox"/>		
C 004	Custodial closets, boiler rooms, and other areas where hazardous or poisonous compounds are stored should be inaccessible to students.		x
S	U		
<input type="checkbox"/>	<input type="checkbox"/>		
C 005	Flammable liquids in excess of ten gallons total shall be stored in approved flammable storage cabinets as required by state fire code (UFC).		x
S	U		
<input type="checkbox"/>	<input type="checkbox"/>		
C 006	First aid kits shall be provided, and the location easily identified to students and staff, and comply with L & I WISHA rules. All first aid kits shall be regularly restocked in compliance with L & I's minimum requirements.		x
S	U		
<input type="checkbox"/>	<input type="checkbox"/>		
C 006a	NOTE: The size and contents of first aid kits should be assessed at each individual school. The number of children should be considered as well as the number of staff, to determine how many kits are needed. School administrators and local health officials should jointly evaluate the first aid kits and the locations.		
S	U		
<input type="checkbox"/>	<input type="checkbox"/>		
C 007	First aid supplies other than those in first aid kits shall be properly stored and organized in cabinets or drawers and labeled as to their contents.	x	
S	U		
<input type="checkbox"/>	<input type="checkbox"/>		



Construction Plan Reviews



Poulsbo Middle School Addition



Required for

- New educational facilities
- Additions or alterations to existing facilities

Components

- **Site approval** – ensure that building site does not pose health risks for students or staff.
- **Plan review** – ensure that facilities meet WAC 246-366 standards for sound control, ventilation, light levels, etc.
- **Pre-occupancy inspections** – verify that facility was constructed in accordance with approved plans.



Procedures

- School districts are responsible for initiating the plan approval process.
- The plan review application portal can be found on KPHD's "School Safety" page (https://kitsappublichealth.org/information/school_safety.php).
- **Fee based.**

Goal

- Ensure that school construction plans meet relevant standards **before** construction begins, avoiding the need for costly retrofits.



School Health & Safety Inspections

Health and Safety Guide

for K–12 Schools in Washington

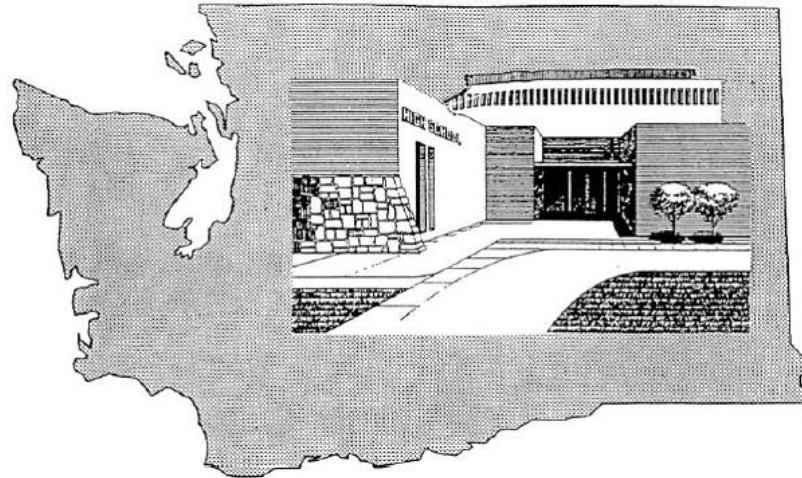


Washington State Department of

Health

Mary Selecky

Secretary
Department of Health



KITSAP PUBLIC HEALTH DISTRICT

Goals

- Identify immediate health & safety issues:
 - Regulatory deficiencies
 - Opportunities to implement recommended best practices
- Address issues not covered by other agencies (e.g., fire marshals, building inspectors):
 - Classroom light levels
 - Water temperatures
 - Chemical storage and recordkeeping
 - Career and technology shop safety requirements
- Help school boards identify health and safety priorities when budgeting for capital projects



Procedures

- Inspections conducted in cooperation with school facilities personnel.
- Schools are inspected at regular intervals:
 - Secondary schools – every two years
 - Elementary schools – every three years
- Schools can also reach out to KPHD to schedule an inspection for:
 - Insurance purposes
 - Board of education accreditation (private schools)

Not fee based. Health and safety inspections are paid for with Foundational Public Health funds.



What are some of the most common problems we see during our inspections?



Unsecured Cleaning Supplies



Inadequate Light Levels



Inadequate Playground Surfacing

Woodchip surfacing should be at least 9" deep.



Unsecured Shelving/Furniture



Indoor Air Quality Problems



Essential oils
(asthmagens)



3D printers
(Volatile organic
compounds)








Upholstered furniture
(harbors dust and other
asthmagens)



Inspection Reports

- Provide thorough explanation of findings, including:
 - Health and safety standards (with relevant citations)
 - Inspector's observations
 - Corrective actions
- Easy-to-understand, at-a-glance formatting.

FINDINGS:  = Satisfactory  = Unsatisfactory  = Suggested improvement **N/A** = Not applicable

Room: 102		
Finding	Description	Citation
	<p>Requirement: All hazardous substances (e.g., cleaning and disinfecting products) are labeled and stored in such a manner as to prevent unauthorized use or possible contamination of food and drink.</p> <p>Observation: Cleaning supplies in unsecured cabinet.</p> <p>Corrective action: Secure all chemicals and/or cleaning supplies in an inaccessible area (e.g., locked, out of students' reach), away from food and drink.</p>	WAC 246-366-050.6
	<p>Recommendation: Room is free of outside chemicals, cleaners, or disinfectants. Only products provided by the school/district are used.</p> <p>Observation: Outside cleaning supplies found in room.</p> <p>Recommended action: Remove any outside cleaners/disinfectants. Use only cleaning supplies that are provided by the school/district.</p>	DOH 333-243 August 2019



Enforcement

WAC 246-366 does not establish specific enforcement protocols.

Health and safety issues are addressed in **collaboration** with school administrators and facilities teams.

KPHD's role is to:

- Identify health & safety issues
- Propose corrective actions
- Provide information and advice



Technical Assistance



KPHD also serves as a technical resource for schools that are looking to address emerging student health concerns. Schools can reach out to us for advice about student health and safety topics not covered in DOH's *Health and Safety Guide*, including:

- Wildfire smoke
- Ventilation and respiratory viruses
- Best practices for asthmagens
- Chemical compatibility and storage

We also partner with the Department of Ecology to provide resources and education to schools about hazardous materials disposal through the Pollution Prevention Assistance program.



Getting the Most Out of the Program

KPHD believes that the best way to protect the health and safety of Kitsap County's students is to build close, effective partnerships with both school districts and individual schools. We can accomplish this goal by:

- Building relationships/lines of communications with school officials.
- Offering technical advice and resources to address emerging school health and safety issues.
- Providing informative and user-friendly inspection reports.



Thank You

Questions? Comments?

CONTACT:

Steve Brown

Program Manager
Solid & Hazardous Waste Program
(360) 728-2277
steve.brown@kitsappublichealth.org

Rudy Baum

Environmental Health Specialist
Solid & Hazardous Waste Program
(360) 728-2274
rudy.baum@kitsappublichealth.org



Kitsap Public Health Board Year in Review and Path Forward

Gib Morrow, MD, MPH
Health Officer
December 5, 2023



KITSAP PUBLIC HEALTH DISTRICT

In Memoriam -- To all who lost loved ones during COVID and after



Be the things
you loved most about
the people who
are gone.



By October of 2021...



Search NIH

Health Information

Grants & Funding

News & Events

Research & Training

Ins

Home » News & Events » News Releases

NEWS RELEASES

Thursday, October 7, 2021

More than 140,000 U.S. children lost a primary or secondary caregiver due to the COVID-19 pandemic

New study highlights stark disparities in caregiver deaths by race and ethnicity, calls for urgent public health response.

“Effective action to reduce health disparities and protect children from direct and secondary harms from COVID-19 is a public health and moral imperative.”



New Surgeon General Advisory Raises Alarm about the Devastating Impact of the Epidemic of Loneliness and Isolation in the U. S. – May 2023



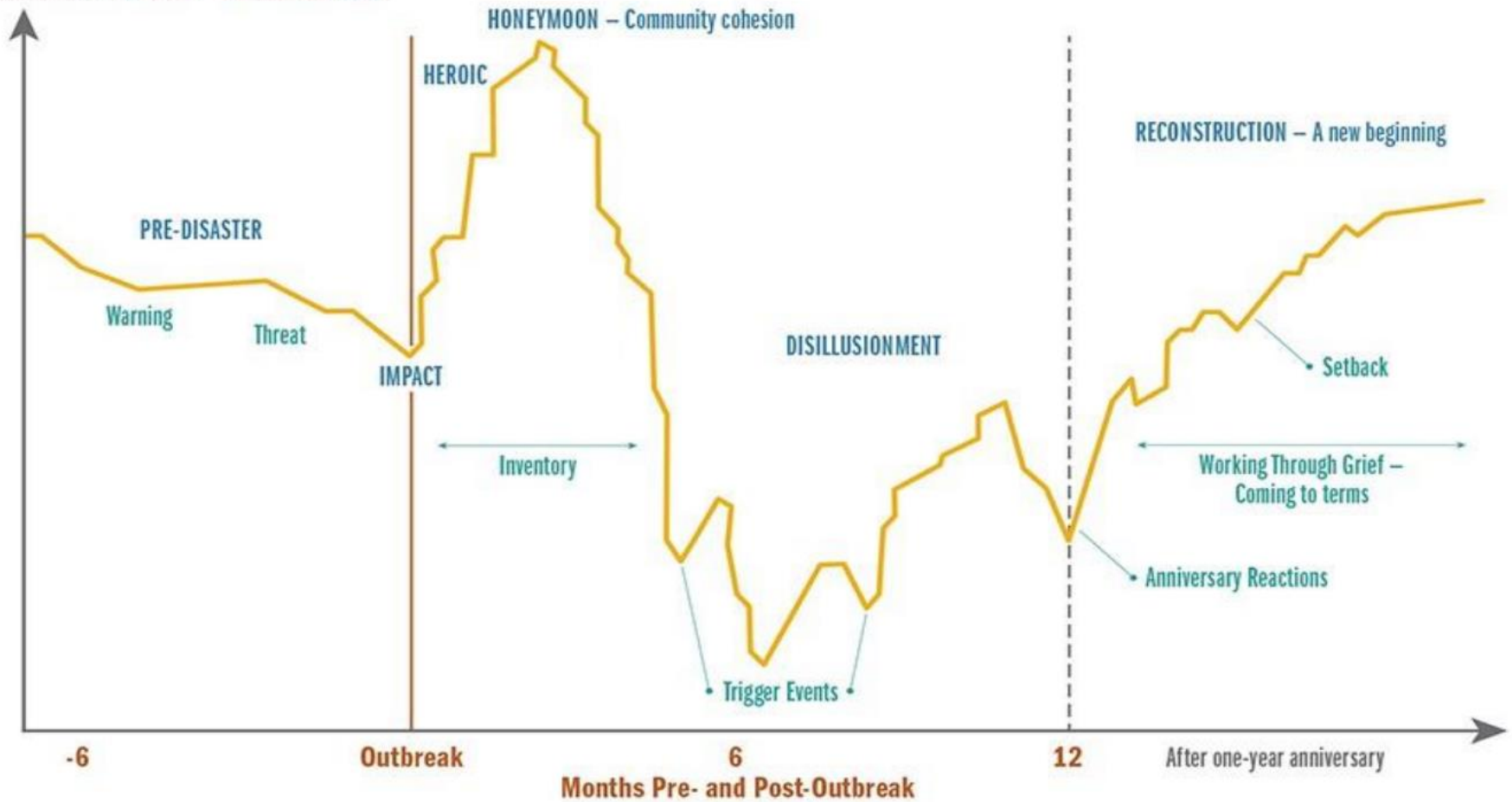
- Strengthen Social Infrastructure
- Enact Pro-Connection Public Policies
- Mobilize the Health Sector
- Reform Digital Environments
- Deepen Our Knowledge
- Cultivate a Culture of Connection



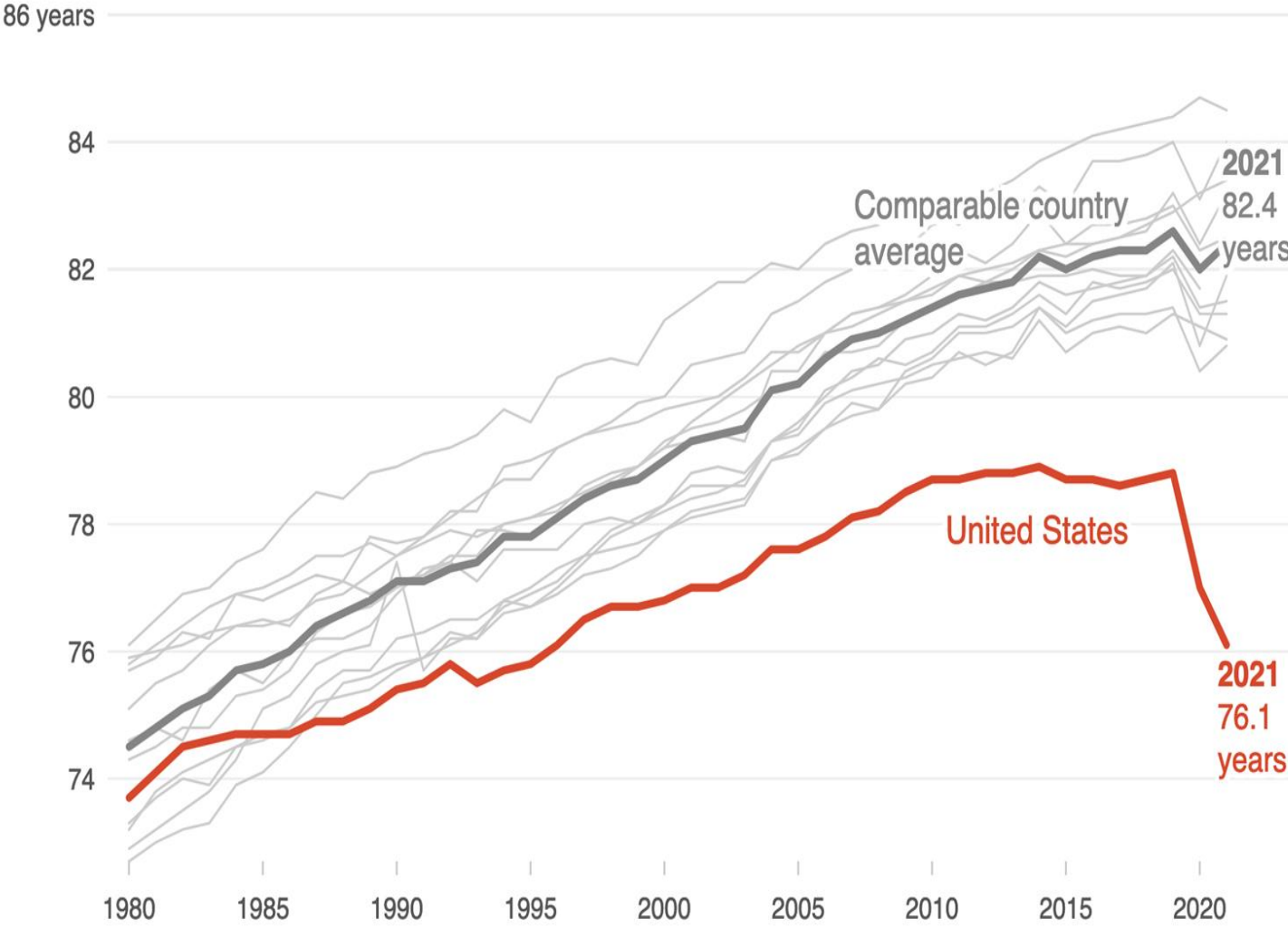
Disasters, crisis and cascading disasters

Reactions and Behavioral Health Symptoms in Disasters

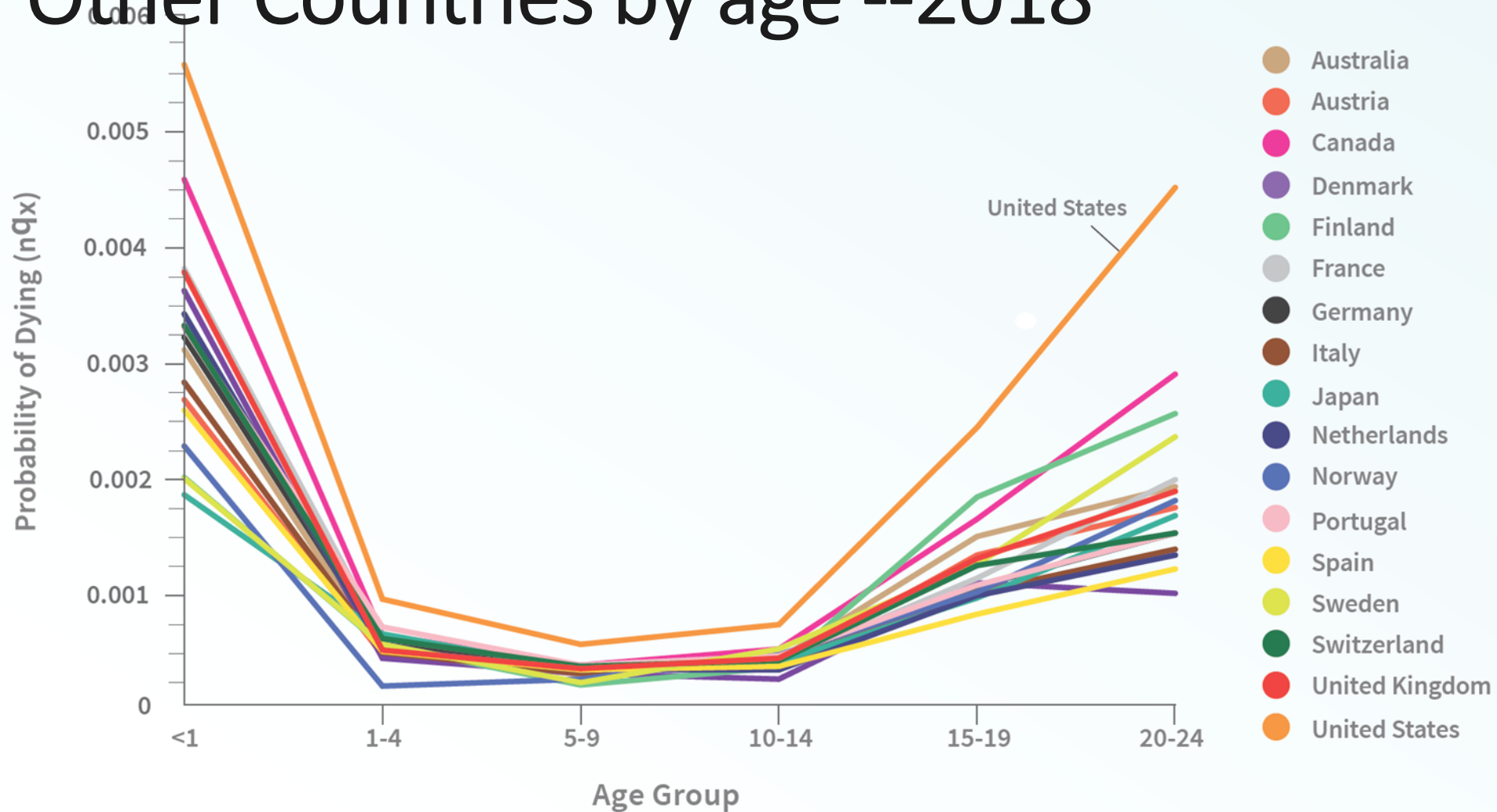
Emotional Response – Lows to Highs



Life Expectancy Trends – 1980 - 2021

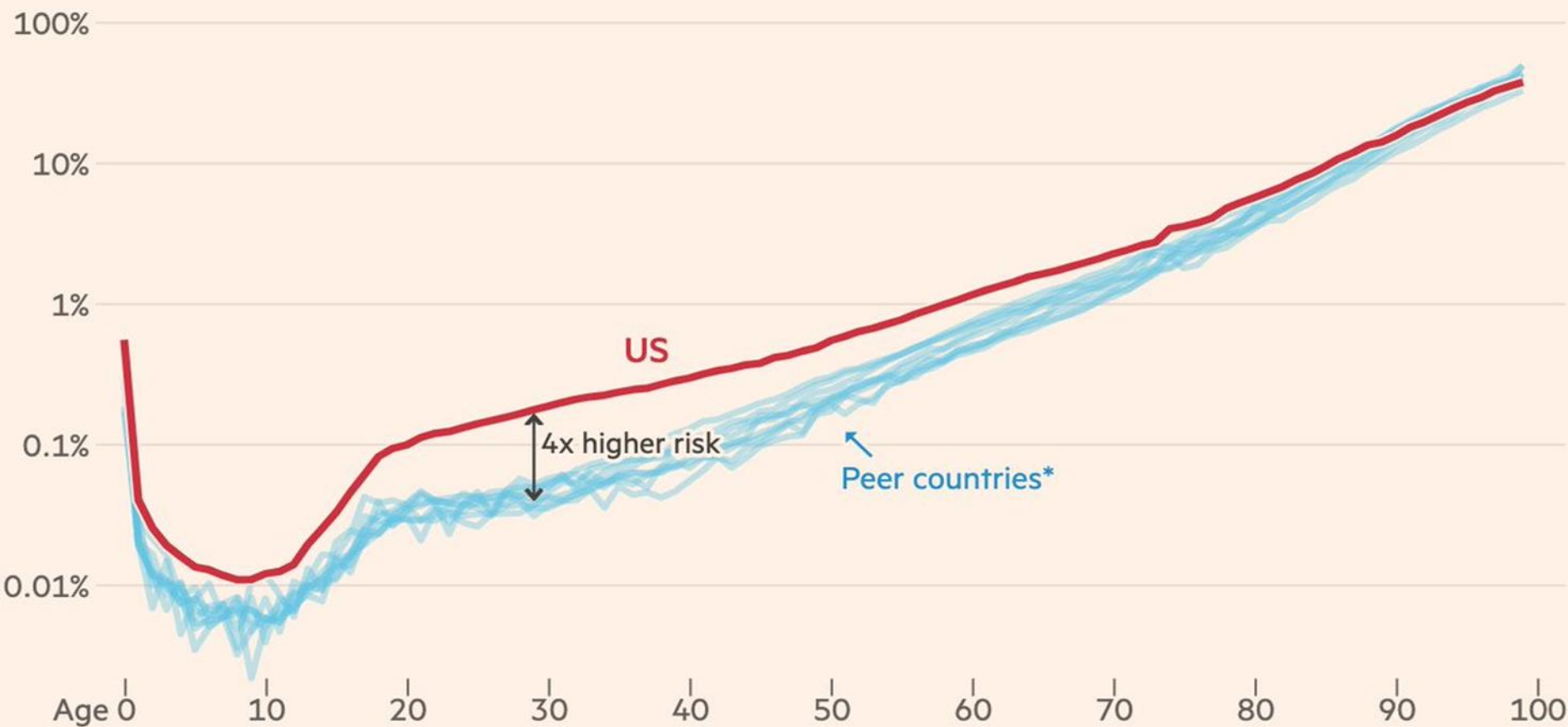


Probability of Dying in the US and Other Countries by age --2018



Most of the US' mortality gap comes in young adulthood

Annual mortality rate by age



*Australia, Austria, Canada, England & Wales, France, Germany, Japan, Netherlands, Sweden, Switzerland

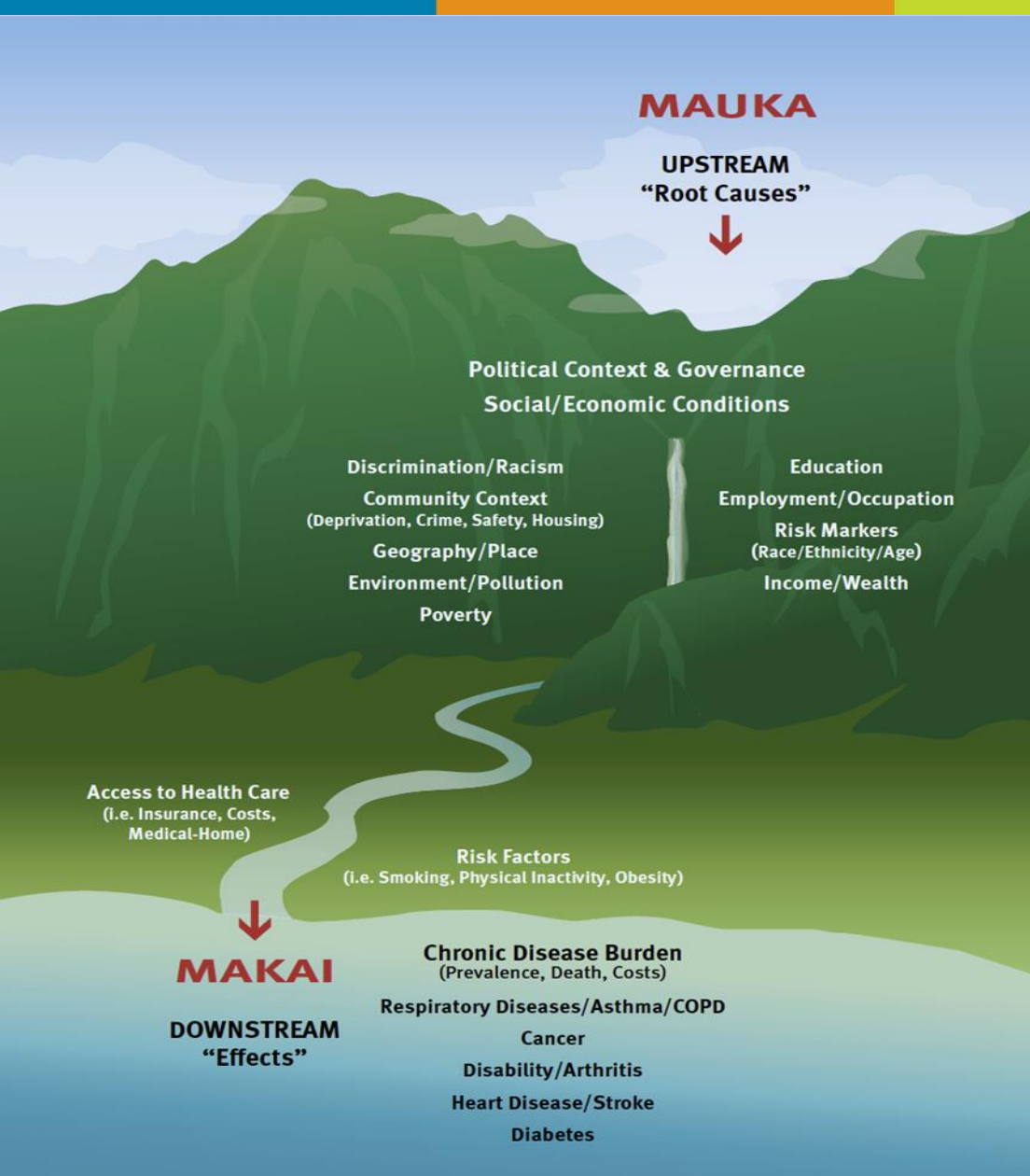
Source: FT analysis of Human Mortality Database

FT graphic: John Burn-Murdoch / @jburnmurdoch

© FT



CHRONIC DISEASE DISPARITIES REPORT 2011: Social Determinants



- Modest contribution of healthcare (~ 10-20%)
- Focus on childhood and younger ages
- Focus on social, economic, political determinants of health
- Poverty and economic inequity as driver of health outcomes
- Strengthen policy and advocacy initiatives



KPHD 2023 – The Year of Assessment!



- Strategic Plan
- PHAB Reaccreditation
- COVID After Action Report
- KCR Community Assessment
- SMMC Community Health Needs Assessment
- KPHD Community Health Assessment
- JHU Healthcare Systems Assessment



KPHD 2023 – A Year of New Work

- New programs -- Policy, planning, and innovation, Performance, CDR, SUPR, MRC,
- New resolutions – healthcare cost and access
- New partnerships –
- New infrastructure – policy, epi, tech/IT
- New communications channels and modes – new website; simple, clear, accurate, transparent, timely
- New outreach – broadly and culturally specific



Challenges and opportunities

- Strained workforce -- HR in overdrive
- Data systems and integration
- Healthcare capacity and integration
- Artificial Intelligence, internet, MI/DI
- Inconsistent funding and reimbursement
- Changing climate and displacement



New Year's Resolutions...

- Implementation (of assessments, resolutions, strategic plan) –
- Partnerships and collaborations
- Modernization and democratization of data (make it work, easy to find, and accessible!)
- Workforce stabilization, development, appreciation
- Communication – channels and content
- Policy and Advocacy
- Build and rebuild trust



**With special thanks to
Keith Grellner for a career
dedicated to Kitsap Public
Health District!!!**



References

- [More than 140,000 U.S. children lost a primary or secondary caregiver due to the COVID-19 pandemic](#)
- [New Surgeon General Advisory Raises Alarm about the Devastating Impact of the Epidemic of Loneliness and Isolation in the United States](#)
- [Dr. Kira Mauseth -- Children's Mental Health Post-COVID, Building Resilience for Them and Ourselves](#) (beginning at minute 34 0f recording)
- [Dr. Steve Bezruschka – Making Kitsap Healthier](#), November 1, 2023

